

## MERCEDES B Class 2012 onwards

Our ref: Ho6o6 – ALL VERSIONS

### Packing Requirements

- BOOTLINER  
Minimum of 8 self-adhesive loop fastener tabs
- REAR DOOR COVER  
Minimum of 17 self-adhesive loop fastener tabs



*Please note this is the LOW version*

### MODEL VARIATIONS

- If you have a False Floor, please ensure you have set it at the level to correspond with your order.
- Please ensure you have set the Rear Seat upper rake to correspond with your order.

### VERY IMPORTANT PREPARATION

To ensure a good bond, when using the self-adhesive fastener to attach the Bootliner to the plastic trim (**Not** the carpet); it is most important to remove silicone film from the vehicle trim. Silicone is applied during manufacture and can also be found in many valeting products. It is **highly likely there will be a build-up of silicone**. Before applying any self-adhesive fastener pads, the surface **MUST be thoroughly** cleaned using a silicone remover. (The fasteners cannot be used once it has been in contact with silicone). We recommend "Intensive Tar Remover" made by AutoGlym and available from Halfords. Wipe off thoroughly **any residue with a separate clean dry cloth**.

**NOTE:** the adhesive takes 24hrs to reach full adhesion – do not touch during.

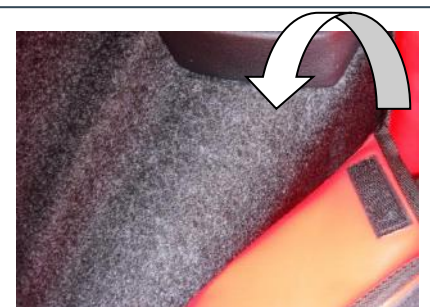


### PREPARATION

- Remove the load cover. It may be replaced later.
- Unfold the Hatchbag and place in the vehicle. The panel with the Hatchbag label sits against the back of the rear seat.

### BASE

- Position the base of the Bootliner snugly into place.
- Start at the tailgate end and work forwards.
- The hook fasteners welded to the reverse face of the base will attach directly to the carpet.



## FITTING FRONT

- Pass the hook & loop fastener straps around each corresponding post and fasten back onto itself.



## REAR PLUS VERSIONS

- **YOU MUST UNFASTEN THE HOOK & LOOP FASTENER / HEADREST STRAPS BEFORE YOU RECLINE THE REAR SEAT UPPERS**



## SIDE

- Position the sides of the Bootliner snugly into place.
- The hook fasteners welded to the reverse face of the base will attach directly to the carpet.



Floor Low version



Floor raised version

## BACK

### BACK END OF SIDES

- The hook fastener sewn / welded to the reverse face of the liner will attach directly to the carpet.
- BACK
- Use the self-adhesive loop fastener pads to attach the back panel to the tailgate.



## OPTIONAL EXTRAS

### FREQUENT USE KIT

If you frequently remove/fit your Boot Liner from/to your vehicle please note that the carpet will “fluff” up – we have an alternative “Frequent Use Fitting Kit”

*The Frequent Use Kit is available to buy from our “on-line” Factory Shop – simply add it to your order from the Factory Shop.*



*Please note these photos are non-specific to your car.*

## SEAT FLAP

- The Seat flap is designed to protect the top of your rear seat giving additional protection from drooling dogs etc.
- The Seat Flap can also be used in conjunction with the Rear Plus / Split options. With the rear seats in the folded position the Seat Flap extends the coverage over any exposed section of the seat backs and the headrests
- Lower the headrests
- Attach the Seat Flap to the loop fastener strip that has been manufactured into the Boot Liner just below the top of the rear seats.
- The flap is then placed over the rear head rests and down the back of the passenger seats.
- If the Seat Flap sits over large headrests and obstructs your rear view: carefully create openings in the flap to accommodate the headrest posts



## BUMPER FLAP

- Fit Bootliner
- Attach the Bumper Flap to the loop fastener strip that has been manufactured into the base of the boot liner.
- The Bumper Flap either folds into the vehicle OR can be detached and stored elsewhere when you close the tailgate.
- Please note that the edges of the fabric are not bound so that any mud, dirt or water can run off.



## TAILGATE COVER

- Use the self-adhesive loop fastener tabs to attach the cover to the plastic trim.

